



2023 MISSION FOODS AMA FLAT TRACK GRAND CHAMPIONSHIP MEET GUIDELINES

These guidelines are to cover event specific information that is not covered in the current AMA Racing Rulebook for competition.

The 2023 AMA Racing Rulebook will govern the operational and technical aspects for the 2023 Mission Foods AMA Flat Track Grand Championship. These Guidelines can be found at <https://americanmotorcyclist.com/events-4/ama-flat-track-grand-championship/> or pick up a copy at Registration. The 2023 rules are in effect as of Jan. 1, 2023. The electronic version on the AMA website supersedes the printed copy. Revisions or clarifications will be reflected in the 2023 Revisions Chart on pg. 3.

The 2023 Mission Foods AMA Flat Track Grand Championship Meet Guidelines will govern this event. These Guidelines can be found at <https://americanmotorcyclist.com/events-4/ama-flat-track-grand-championship/> or you can get a copy at Registration.

INDEX

Introduction.....	1
Age and Eligibility	2
Gate Times/Parking Information	2
Ticket/Camping Information.....	2
General Facility Information.....	2
Common Questions.....	3
Directions/Facility Map.....	4
Classes.....	6
Supplemental Rules/Regulations.....	7

INTRODUCTION

The AMA Rulebook and Meet Guidelines contain rules, technical requirements and information governing all events that make up the Mission Foods AMA Flat Track Grand Championship for meet operational and technical aspects.

The AMA Rulebook and Meet Guidelines are designed to provide the information you will need to prepare your motorcycle and yourself for competition, plus an overview of rules that apply to the racing program, along with a summary of offenses and penalties pertaining to rules violations.

The intent of a specific rule or procedure will override a competitor's interpretation. The intent of a rule or procedure will be determined by competent officials. If any rule or guideline is unclear to the competitor, the competitor is advised to get written approval prior to any modifications.

The AMA will answer any requests for rule or procedure clarifications or interpretations. Requests must be submitted in writing to AMA technical staff. Any prior verbal approval from AMA staff or officials without a written statement with regard to the interpretation of a rule or procedure will be deemed invalid.

Please note that while every effort has been made to write AMA rules and Meet procedures in a clear and unambiguous fashion, it is impossible to anticipate every circumstance. It will be the AMA's responsibility to make decisions regarding rules enforcement.

AGE AND ELIGIBILITY

1. A current AMA Membership is required for all riders. Memberships are available for \$49 a year. Youth Memberships are available for \$29 a year (for ages 11 and younger), and Family Memberships are also available at a rate of \$98 for up to 5 members. For more information on these Memberships, please contact the AMA offices at 1-800-AMA-JOIN. Memberships are available at Rider Registration or in advance online at www.americanmotorcyclist.com.
2. No One-Event passes will be available for purchase at this event.
3. **MINORS (RIDERS UNDER 18 YEARS OF AGE)**
 - a. All Minors must complete an AMA Minor Release to be eligible to compete at the AMA Flat Track Grand Championship. AMA Minor Releases can be found here and submitted electronically: <https://americanmotorcyclist.com/annual-release-forms/>.

GATE TIMES/PARKING INFORMATION

1. Opening times on Tuesday, June 13:
 - 12 p.m. – Bob Green Drive open for Competitors only (Rider Registration/Check-In at SIC Building); no entry into the facility prior to this time.
 - Gate 3 will be open 24 hours for camping (see below Ticket/Camping Information).
 - Main Gate will be open 24 hours ***unless closed for racing (see 2023 Racing Schedule for tentative race times)***.
2. Parking is available on the south end of the fairgrounds surrounding the SIC Building (see map later in this document).

TICKET/CAMPING INFORMATION

1. **Tickets:** Racers and spectators at FTGC must purchase day or week gate admission passes, sold online in advance for racers or on-site for all racers and spectators. Pass is required at all times. Day passes will be \$15 per person, and week passes will be \$75 per person.
2. **Pit Vehicle Passes:** Anyone with a pit vehicle will be required to purchase a pit vehicle pass. These will be sold online in advance for racers or on-site for racers and spectators for \$20/vehicle.
3. **Camping:** \$25/night with water and electric; see <https://www2.illinois.gov/sites/dsf/info/Pages/Camping.aspx> or call Du Quoin State Fairgrounds for more information.
4. **Facility Information:** Du Quoin State Fairgrounds, 655 Executive Drive, Du Quoin, IL 62832 - (618) 542-1515; <https://www2.illinois.gov/sites/dsf/Pages/default.aspx>.

GENERAL EVENT AND FACILITY INFORMATION

1. Racing engines shall not be run after 10 p.m. or before 6:30 a.m.
2. Pit vehicles may only be operated by persons holding a valid state operator's license.
3. Pits will be closed after racing ends each day. Please remove any personal items from the pits after racing concludes for the day. The AMA is not responsible for lost, stolen or damaged items.
4. Facility speed limit: 5 mph.
5. Posting of signs is prohibited. This does not apply to personal, or team sponsorship banners hung within the person's or team's paddock space.
6. Please be respectful of the space needs of yourself and others so that we do not run out of parking space.
7. Packages shipped to the track should be shipped UPS/FedEx with name and cell number to 655 Executive Drive, Du Quoin, IL 62832. Packages can be picked up in the Main Office, located in the grandstands next to the Mile.
8. Please secure your trailer / equipment and other valuables. Do not leave your paddock area without securing your belongings. AMA and Du Quoin State Fairgrounds are not responsible for theft or damages.

Answers to some of the common questions asked by our members:

Q: What happens if it rains?

A: Typically, events will continue even if it's raining or threatening rain. In certain instances, races may be delayed, however it is very rare that an entire event is canceled due to inclement weather.

Q: What phone number do I call if I need emergency assistance?

A: For Du Quoin State Fairgrounds Security, please call (618) 521-2935. In an emergency, please dial 9-1-1.

Q: Do I need to always keep my pit pass on me?

A: Yes, you do. To gain entry to all the areas your pass grants you access to, please always keep your wristband pit pass with you. This is done to protect the investment of fans and ensure proper access. **If you leave and fail to have your wristband on upon re-entering, you WILL BE REQUIRED to purchase a new pass at this time. No exceptions.**

Q: Can I bring my pet to the races?

A: Yes, as long as they are on a leash. Pets are not allowed in the facility buildings or grandstands unless it is a service dog.

Q: Can I bring my bicycle?

A: Bicycles are allowed. Personal golf carts and off-road vehicles are also allowed but require the purchase of a pit vehicle pass, available at the gate upon entry.

Q: How do I get a golf cart for the weekend?

A: Golf carts are available by calling Little Egypt Golf Cars at (618) 548-2366.

Q: Where is the lost and found?

A: The lost and found is located at the Main Office, located in the grandstands next to the Mile Track.

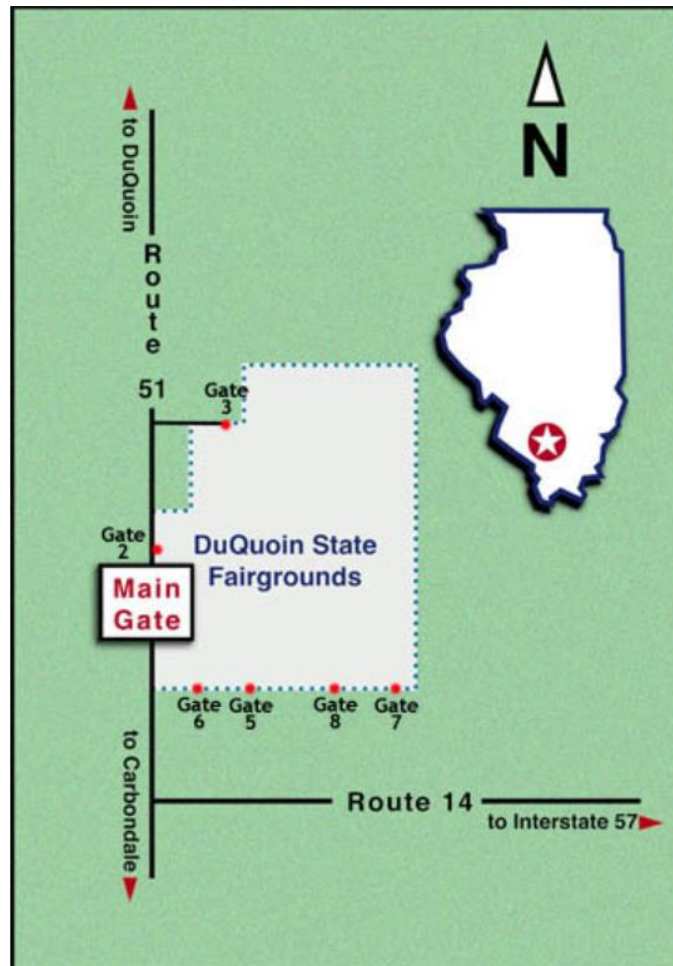
Q: Are there shower houses at the fairgrounds?

A: There are shower houses located in the camping area, as well as near the Mile Track.

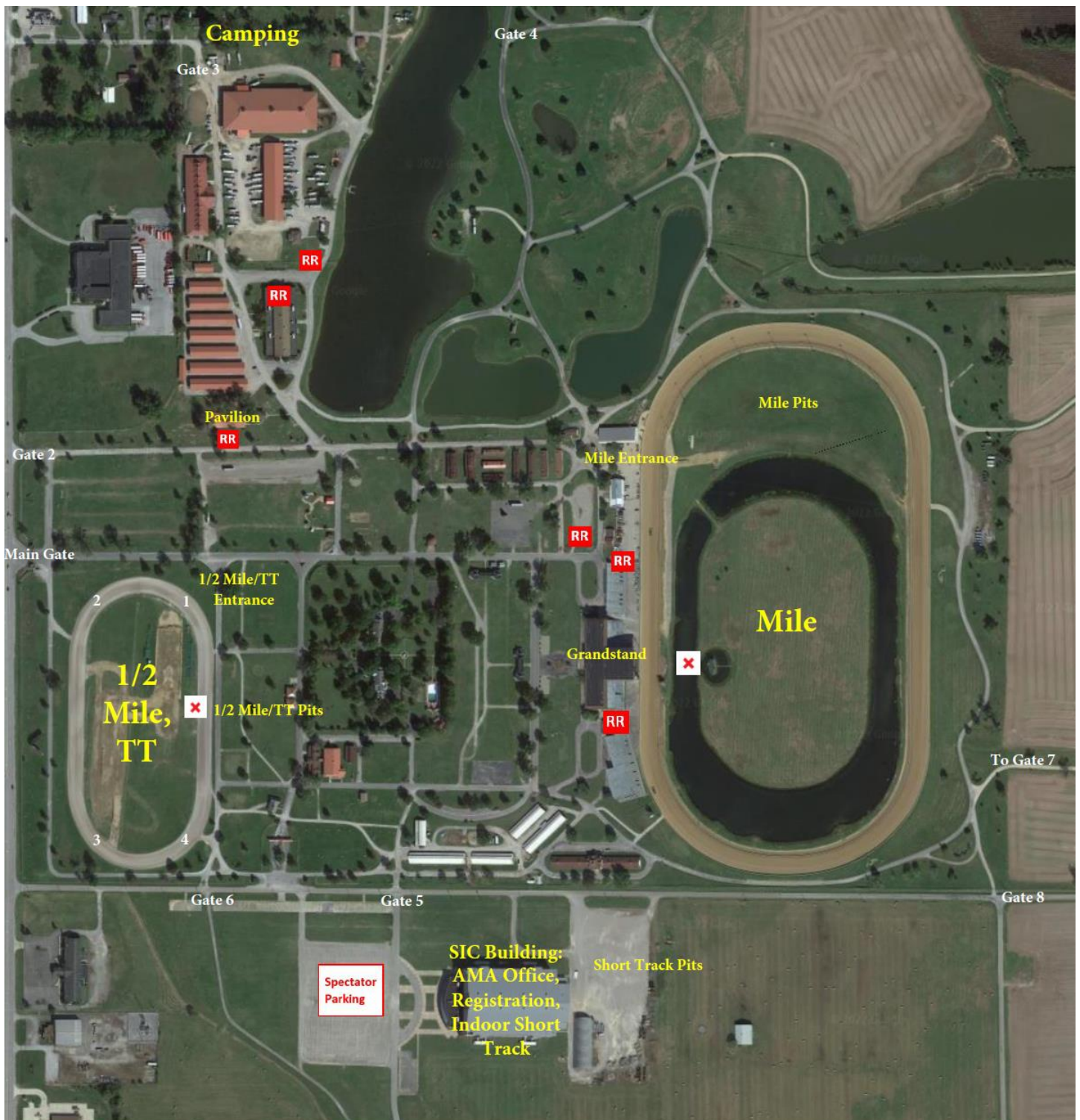
Q: Will there be food options at the fairgrounds?

A: Yes, there will be two food vendors available during the week. They will be located next to the race track for that day and will be open during racing activity.

DIRECTIONS/FACILITY MAP



- From St. Louis -- I-64 east to Route 51 exit. Follow Route 51 south to Du Quoin.
- From Paducah -- I-24 west to I-57 to Benton exit. From Benton take Route 14 west to Du Quoin.
- From Chicago -- I-57 south to Benton exit. From Benton take Route 14 west to Du Quoin.



CLASSES

Group 1 Classes: Youth/Vet

50cc Production Chain Drive Jr. (4-6)
50cc Production Chain Drive Sr. (7-8)
50cc Production PW Shaft Drive (4-8)
50cc Production Chain Drive Shifter (4-8)
65cc Production (7-11)
65cc Modified (7-11)
85cc Modified (9-11)
85cc Production (9-13)
85cc Modified (9-13)
85cc Modified Supermini (12-15)
Veteran (30+)
Senior (40+)
Super Senior (50+)
Masters (60+)

Group 2 Classes: Amateur

Women 86cc and Up (12+)
250cc Production
250cc Modified
250cc – Open Singles (12+)
450cc Production
450cc Modified
Open Heavyweight
Hooligans

The event schedule is as follows:

- Tuesday, June 13 – Rider Registration
- Wednesday, June 14 – Amateur TT
- Thursday, June 15 – Youth/Vet TT
- Friday, June 16 – Amateur/Vet Mile
- Saturday, June 17 – Youth/Vet Short Track, AFT Mile
- Sunday, June 18 – Youth/Vet Half-Mile, Amateur Short Track
- Monday, June 19 – Amateur Half-Mile
- Tuesday, June 20 – Youth Short Track

**This schedule is subject to change*

SUPPLEMENTAL RULES/REGULATIONS

Race Officials:

The **Race Director** is responsible for:

- Ensuring proper observance of the regulations
- The control of practices, qualifying and races, adherence to the timetable and, if deemed necessary, the making of any proposal to the Race Direction to modify the timetable in accordance with the AMA Regulations
- The stopping of practice or the race in accordance with the Sporting Regulations if deemed unsafe to continue, and ensuring that the correct restart procedure is carried out
- All versions of the starting procedures
- Directing the use of ambulances/fast intervention vehicles
- Immediate approval and signature with time of provisional results (practices, qualifying, warm-ups, starting grids and races)

The **Rider Representative** is responsible for:

- Assisting riders with interpreting and clarifying AMA and technical regulations
- Accepting rider input regarding safety issues
- Accepting, evaluating and making recommendations regarding rider concerns and requested exceptions

The **Safety Officer** is responsible for:

- Supervision of all aspects of safety
- Ensures all tracks have been prepared and ready for competition
- Works with track personnel to maintenance track surfaces throughout the day's racing activities

2023 Mission Foods AMA Flat Track Grand Championship Race Direction:

- Race Director – Ken Saillant
- Safety Officer – Cory Texter
- Rider Representative – Mike Burkeen

All penalties and sanctions will be issued by Race Direction. The three-member Race Direction team replaces the meet referee in all decision-making aspects of the meet(s).

Other Information:

1. The 2023 Mission Foods AMA Flat Track Grand Championship is an AMA National Championship Event sanctioned by the American Motorcyclist Association, and these Supplemental Regulations are used to explain and clarify certain requirements and procedures.
2. If one or more main events cannot be run, results will be awarded based on heat and/or semi results.
3. Riders cannot enter more than four amateur classes or three youth classes per meet.
4. Knobby tires may be permitted by Race Direction for the 50cc Production classes.
5. The use of a maximum 17-inch rear wheel for all 85cc classes in flat track, TT scrambles and any 85cc Production class is permitted.
6. AMA Flat Track Grand Championship:
 - a. The points scale shown below will be used.
 - b. Riders who are disqualified from a main event will not receive points.
 - c. Ties in the final standings will be broken for 1st, 2nd and 3rd places only. The first tiebreaker is the better finish in the final main event in the class; the second tiebreaker is the better finish in the next to last main event in the class, etc. If the main events are run in an order different than originally scheduled, e.g. because of a rain delay, the actual order in which the races took place will apply.

7. The machine brought to the starting line for his/her first heat is considered the qualified machine for that day's meet.
8. Riders that qualify for a main event do not need to report to the staging line if they are unable to race the main event. They have already qualified and will receive last place points based on the number of participants in the event. Example: 8 rider main event: rider unable to participate will receive 8th place finishing points. If more than one rider is unable to start, their points will be based on the main event qualifying position.
9. Protests will be accepted up to 30 minutes after race results have been posted. Race Direction may hold a protest until the completion of the Overall Championship Event.
10. Motorcycles that are impounded must remain in the impound area until Race Direction allows for their removal. Motorcycles may be impounded for any length of time pending protests and/or appeals. If the motorcycle is being ridden in another class, it must remain in the designated impound area, and all work done must be completed within this designated area.
11. On tracks one half mile and longer, abrasion resistant out gear is required. Abrasion resistant equals leather, Cordura, air mesh or stretch Kevlar. Exceptions may be made for 50cc Shaft riders but only by authority of Race Direction.
12. It is highly recommended that chest and back protection be worn by all competitors. It is required for all competitors in Youth Classes to wear chest and back protection. The protector may be worn under or over the jersey, and it should cover the sternum anterior ribs, posterior ribs, and spine from T1 to T12.
13. In order to qualify for the Overall Event Championship, a rider must have participated in a minimum of 50% of the discipline-specific meets.

INCLEMENT WEATHER: Any meet not run due to weather, or any other delay, may be run that day. The AMA reserves the right to change schedules and venues as necessary. If a meet is cancelled, it may be necessary to replace the discipline-specific meet (i.e. Short Track) with another discipline-specific meet (i.e. Half-Mile).

Event Championship Points will be awarded as follows:

- 1st Place – 30 points
- 2nd Place – 25 points
- 3rd Place – 21 points
- 4th Place – 18 points
- 5th Place – 16 points
- 6th Place – 15 points
- 7th Place – 14 points
- 8th Place – 13 points
- 9th Place – 12 points
- 10th Place – 11 points
- 11th Place – 10 points
- 12th Place – 9 points
- 13th Place – 8 points (if applicable)
- 14th Place – 7 points (if applicable)

Hooligans Class Rules:

Eligibility:

1. A valid AMA membership is required.
2. Riders must be 18 years old to participate.

Equipment:

1. Stock Production Street Bike Frames:
 - a. Stock, production motorcycle must have originated with a 649cc or larger displacement twin, triple, or multi cylinder engine. (Model year 1986-Newer)
 - b. No geometry changes allowed unless they are a bolt on application.

- c. Frames must keep original steering neck angle, stock swingarm pivot location, stock upper shock mount location, and a MINIMUM of a 56" wheelbase.
2. Cracked or broken frames are prohibited.
3. Kickstands must be removed or secured.
4. Minimum weight of 370 lbs.
5. Wheel speed and transmission sensors must be disabled and remain disabled at all times (unless required for motorcycle to operate.) *Exemptions can be requested. Sensors are allowed to be present and used as a place holder/spacer/plug, etc.
6. Riders are permitted to switch bikes at any time during an event without penalty.

Brakes:

1. Front brakes are not permitted for oval events.
2. Front brakes are permitted for TT events only.

Tires:

1. 19" Flat Track racing tires or 17" wet/rain racing tires only.
2. Tires from any manufacturer are permitted.
3. Knobby tires are not permitted.

Engines:

1. Stock, production motorcycle must have originated with a 649cc or larger displacement twin, triple, or multi cylinder engine. Engine modifications are unlimited.

Exhaust System:

1. Exhaust pipes and mufflers must be used and be securely attached together and bolted to the frame. Mufflers must have sound absorption mechanisms or packed baffling.
2. The discharge end of the exhaust pipe may not extend beyond the rear edge of the rear tire. For safety reasons, the exposed edge(s) of the exhaust pipe outlet(s) must be rounded to eliminate any sharp edges.
3. The inside of the exhaust discharge end must be a maximum of five inches from the outside edge of the tire or frame in order to prevent another rider's wheel or leg from becoming trapped.

Coolant/Fluid Containment:

1. Coolant may be propylene glycol based. It must be nontoxic and water soluble. Ethylene glycol is not an acceptable coolant.
2. Engines with fluids leaking from any of the breathers will not be allowed onto the racetrack.

Handlebars and Controls:

1. Cracked or broken handlebars are prohibited.
2. Control levers must have minimum 0.25-inch diameter ball ends.
3. Motorcycles must be equipped with a functional ignition cut-off switch or button, mounted on the handlebar and within reach of the rider's hand when placed on the grip. Momentary-off style switches are recommended and preferred.
4. Motorcycles must have a self-closing throttle mechanism.
5. All handlebar ends must present no cutting hazard.
6. All levers, pegs and other protruding parts must be rounded or taped for safety.

Lights:

1. Lights and turn indicators should be removed if possible.
2. All lights not removed must be completely covered with tape, so all glass/plastic is retained in the event of an impact. Clear tape is acceptable.

